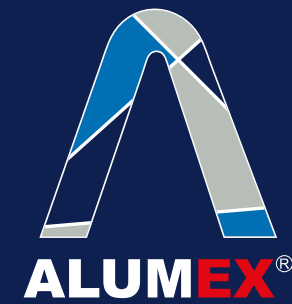




ALUMEX[®]

ALUMINUM **EX**PERTS



EXCELLENCE ISN'T THE GOAL...
IT'S THE WAY.

When the two brothers Ra'fat & Wesam decided to start **ALUMEX**, it wasn't based on a desire to fulfil a personal dream, it was rather a desire to share a vision, a vision where excellence is not a goal, it's a lifestyle, it's a way of thinking and working.

With hearts filled with passion, souls equipped with decisiveness, eyes looking beyond expectations, and most important, minds sharpened with years and years of experience, the two brothers established Nojoom Eylaf Industrial Company LLC. **ALUMEX** not to compete, but to complete the customer's desires to have the best quality, best services, with reasonable prices.

ALUMEX headquarters and showroom are located in the beautiful Amman, with a factory in the industrial area that uses the latest art of technology in this field, supporting the demand on time, with great excellence.

ALUMEX is also expanding regionally, as we started the same success story in Baghdad, we established a showroom, and built a factory to supply and Iraqi market demands.

**WE SHARED OUR VISION,
IT'S YOUR TURN TO SHARE
YOUR DREAMS ...**

The rebellious ideology of **ALUMEX** leadership seeks not only to sell and install high quality aluminum products, but yet to be a part of your experience, to be your consultant, to be on your side not on the other side.

Excellence isn't the goal ... Excellence is the way, this is our core value in **ALUMEX**, therefore our goal is the customer's trust and respect, such goals can not be gained without being consistent in providing the best, the best consulting, the best solutions, the best products, the best services & after service through well trained and experienced teams and competitive prices.

Our Vision is to drive **ALUMEX** to be among the elite companies in the aluminum field locally and regionally.

We have the tools, the experience, the knowledge & knowhow, all we need is your permission to service you in the best way possible, and we promise ...

WE WILL MAKE YOU PROUD
YOU CHOOSE **ALUMEX**.





TABLE OF CONTENT

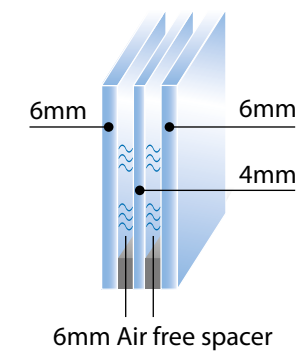
| | |
|--------------------------------|----|
| ALUMEX TRIPLE | 11 |
| ALUMEX 16 | 13 |
| ALUMEX 14 | 15 |
| ALUMEX 4500 | 17 |
| ACCESSORIES | 18 |
| REYNAERS CW 50 | 21 |
| REYNAERS CP 130 | 23 |
| REYNAERS ES 50 | 25 |
| SOMFY FOAM ROLLER SHUTTERS | 27 |
| SOMFY IO-HOMECONTROL | 29 |
| SOMFY GATE OPENER-GARAGE DOORS | 31 |
| SKYLIGHTS | 33 |
| ALUCOBOND CLADDING | 35 |
| LOUVERS | 37 |
| STABIA (ALUMINUM WOOD) | 39 |
| STABIA EU80WIT | 41 |
| STABIA EU60WIT | 42 |
| STABIA EU170WIT | 43 |
| OUR PROJECTS | 45 |



ALUMEX TRIPLE

Slide System

- Aluminum thickness 1.6 – 1.8 mm
- Triple layers of glass (6mm-4mm-6mm) with a 4mm air free spacer
- High quality leaf-fly screen doors
- Dual water drainage system
- Air passages are sealed on both sides through 4 way brushes
- Automatic lock *fipini*
- To gain more tightness against water & air leakage a U shaped EPDM rubber gasket is applied.

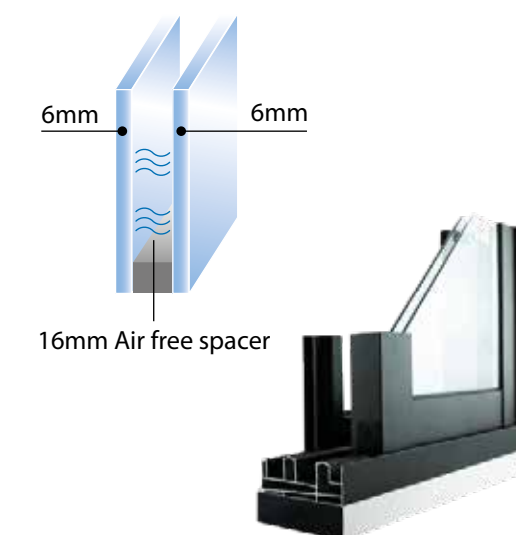




ALUMEX 16

Slide System

- Aluminum thickness 1.6 – 1.8 mm
- Two layers of glass 6mm each with a 16mm air free spacer
- High quality fly screen doors Dual water drainage system
- Air passages are sealed on both sides
- Automatic lock *fbpm*
- To gain more tightness against water & air leakage a U shaped EPDM rubber gasket is applied.

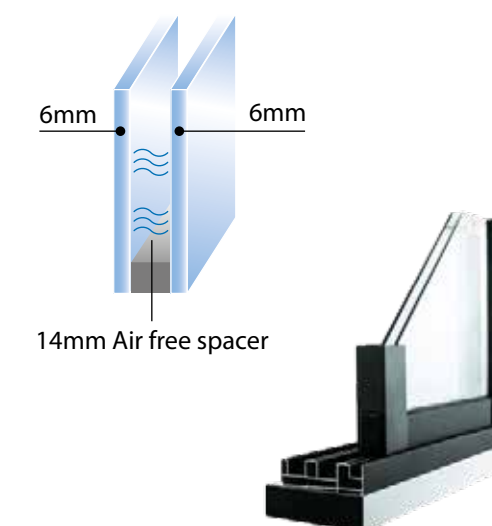




ALUMEX 14

Slide System

- Aluminum thickness 1.3 – 1.6 mm
- Two layers of glass 6mm each with a 14mm air free spacer
- High quality leaf-fly screen doors Dual water drainage system
- Air passages are sealed on both sides
- Automatic lock *fbpm*
- To gain more tightness against water & air leakage a U shaped EPDM rubber gasket is applied.



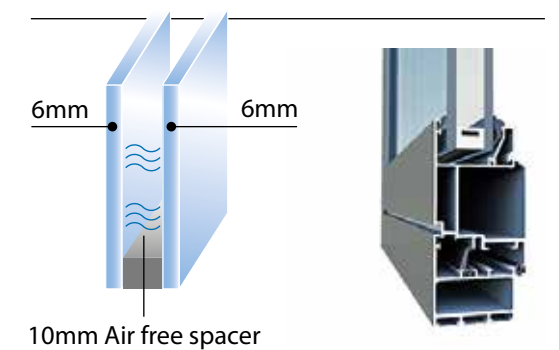


ALUMEX 4500

Hinged System

- Aluminum thickness 1.6 – 1.8mm
- Two layers of glass 6mm each & Spacer 10mm
- High quality fly screen doors
- Dual water drainage system
- Air passages are sealed on both sides
- To gain more tightness against water & air leakage a U shaped EPDM rubber gasket is applied on both sides (Inside-Outside)
- The glass can be opened In more than 1 direction:
 - Tilt
 - Full leaf (Turn & Tilt) using closer lock *fapim*

* Same system could be applied on single/ double doors





Accessories

The assembly or finishing part of the workshop is vital, it's the part where you can actually see the final product installed, and ready to use, therefore, we give great attention to this process; and using the best accessories help us to provide you with the best, as promised.

Some accessories can be actually seen, like door handles, and the lock, and many other isn't, but are very important to secure your product and guarantee it will act as promised, those unseen accessories such as (Hinges, EPDM, Teflon wheels, Water drainers, Brushes).

We at ALUMEX give you the chance between the products we have or represent, whether is a fine local made, or international such Somfy, Domus, Reynaers, Stabia.

somfy

GEZE

fapim

DOMUS

WÜRTH

EXCELLENCE ISN'T THE GOAL...
IT'S THE WAY.

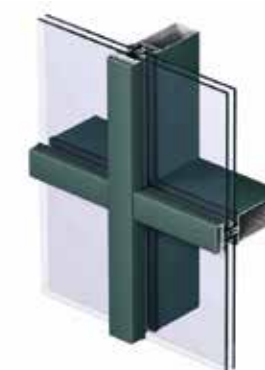


REYNAERS CW 50

Curtain Wall

Concept Wall® 50 is a curtain wall façade and roof system that offers unlimited creative freedom and allows maximum entrance of light into the building. The system offers different individual styles with various outside appearances. Any combination of vertical and inclined planes are possible together with the integration of different types of vents. The extensive range offers technical solutions for the different performance requirements of a façade such as fireproof and high insulating solutions.

REYNAERS has a wide range of high quality products to chose from: www.reynaers.com





REYNAERS CP 130

Slide System

Concept Patio®130 is a highly insulated slide and lift-slide system, which meets the highest requirements with regard to insulation, stability and safety.

CP 130 is available with various opening possibilities. The low threshold option offers a solution to improve the buildings accessibility.

A special corner solution makes it possible to open up spaces without any fixed corner element, creating a perfect and clear continuity between the indoor and outdoor spaces. This makes CP 130 ideal for rooms with a view.

REYNAERS has a wide range of high quality products to chose from: www.reynaers.com





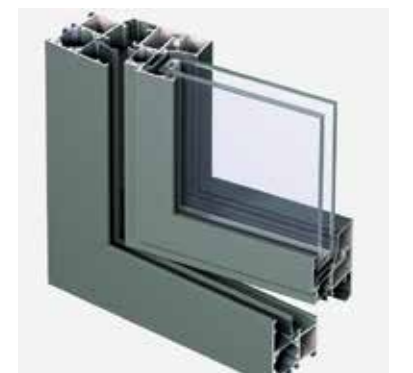
REYNAERS ES 50

Hinged System

Eco System® 50 is a well-insulated system for inward and outward opening windows, that combines aesthetic design and energy efficiency with a moderate price.

The system's limited built-in depth allows its application in many constructions, even with reduced wall thicknesses. Design wise, ES 50 offers, next to the functional design frames, special block profiles resembling wooden frames. The use of invisible fittings results in an even more elegant look, since hinges are no longer in sight. In addition, ES 50 can comply with burglar resistance class 2, offering a safe and secure solution both for residential constructions and utility buildings.

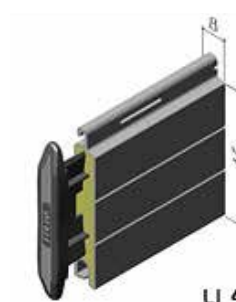
REYNAERS has a wide range of high quality products to chose from: www.reynaers.com



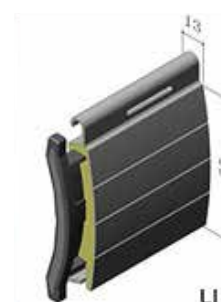


Foam Roller Shutters

- The mechanism of injecting polyurethane foam into the slats, which are already coded and processed thermally, adds a great value of insulation and gives the blades higher protection from weather elements.
- Slats width 5.5mm, thickness 12mm.
- The blades performs a high cohesion due to the nature of its overlapping mechanism.
- Polyurethane Rolling Shutters reduce heating and cooling costs by providing thermal padding
- Wide collection of colors.
- They can be either flat or curved with different sizes.
- Motorized by **somfy**



LI 45

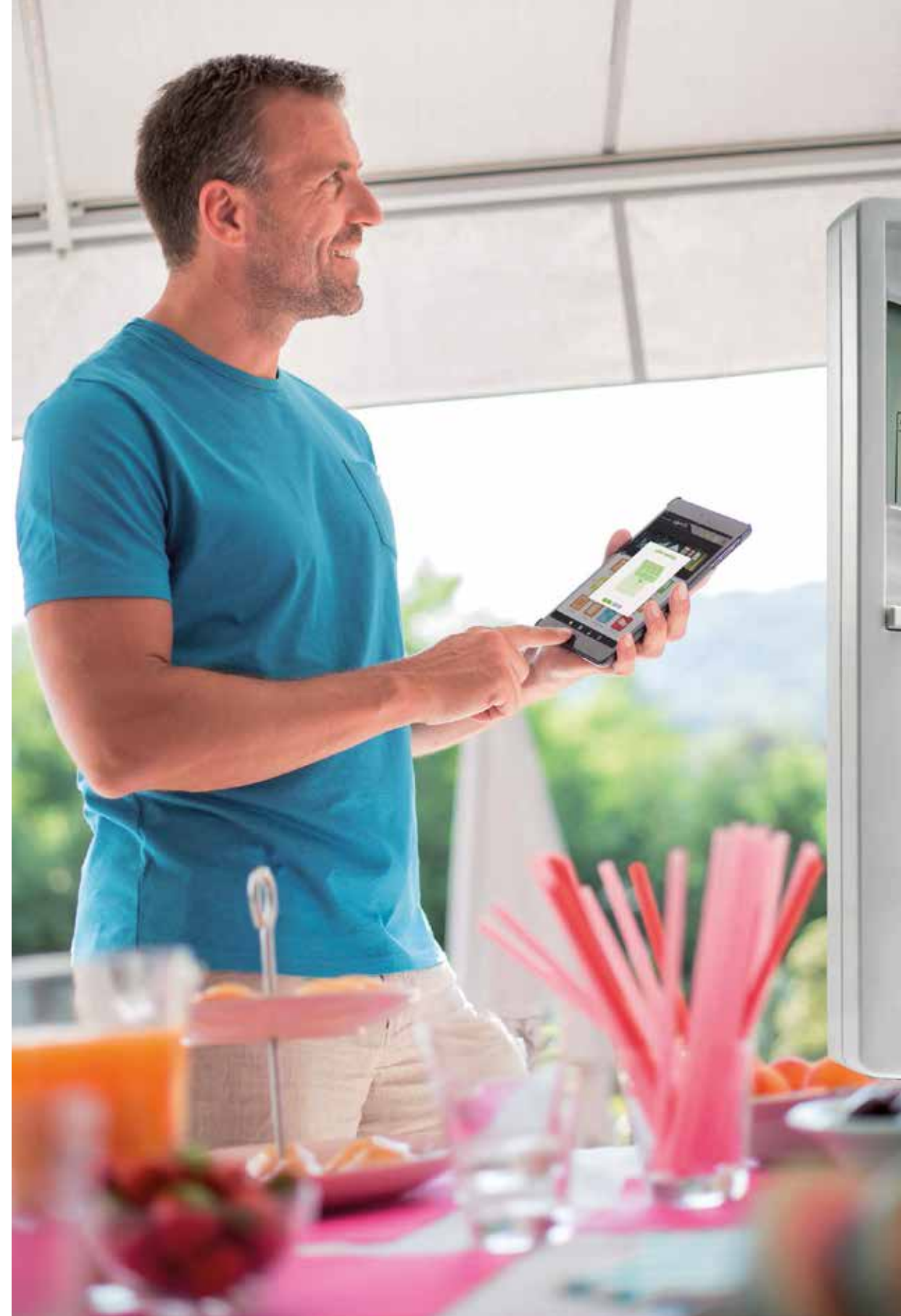


LI 55



Extruded Roller Shutter

- Designed with double wall aluminum extruded profile, it offers great strength and weather proof solutions. It can be used for residential or commercial applications.
- When its closed it keeps intruders away, forming a barrier separating the exterior from the interior, increasing therefore the security of the building.
- Slats width 3mm, thickness 9mm.
- Wide collection of colors.
- Motorized by **somfy**



io-homecontrol

- Somfy are world leaders in home automation.
- Automation : Combine the motor with the range of Somfy controls and sensors for smart climate control, even when you're not home!
- Easily Integrated Motors can be easily integrated into home management systems, tablets, mobile, C-BUS, Dynalite & many other control and automation systems
- Energy Efficient Reduce your energy usage by controlling the amount of heat and light entering your home

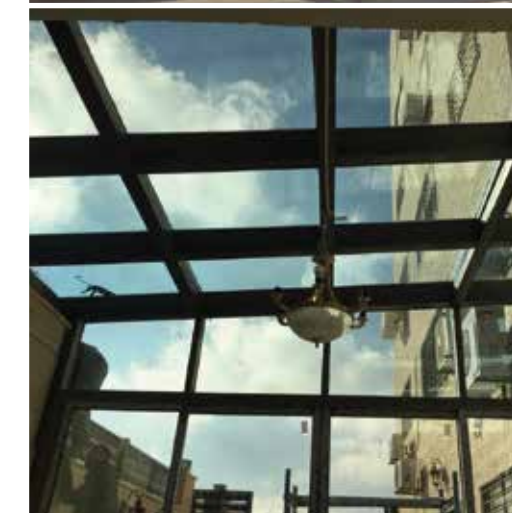




Gate Opener & Garage Doors

- Electric gate motors, motorizations. All remote controls, accessories and sensors for home automation gate.
- Electric motors for sectional and lateral opening gates. . All motorizations, remote controls and sensors for garage door home automation.
- Motorized by **somfy**





Skylights

Skylights comes in various shapes and purposes, it could be mounted to provide sunlight, it could be operable for ventilation (Roof Window), and simply it could be fixed to give that elegant look, that could be achieved only when chosen and crafted correctly.

Skylights shapes: there are many shapes for skylights, such as Single pitch, Double pitch, Shed roof, Flat roof, M-Shaped roof, Butterfly roof, Combination roof, Segmented dome, Continuous dome, Dormer, Pyramid, Pyramid hip roof, Extended Pyramid.



Alucobond Cladding

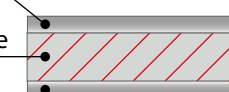
Also called ACP (Aluminum Composite Panel) is a sandwich structured panel, made from two thin sheets of Aluminum, with a low-density polyethylene in between.

This creates a panel, flexible but yet amazingly strong due to the interaction between the Aluminum sheets and the polyethylene holding them together. It can be shaped as desired for façade cladding and awnings, as it has high tolerance to weather forces.

Aluminum Sheet

Non-Aluminum Core

Aluminum Sheet





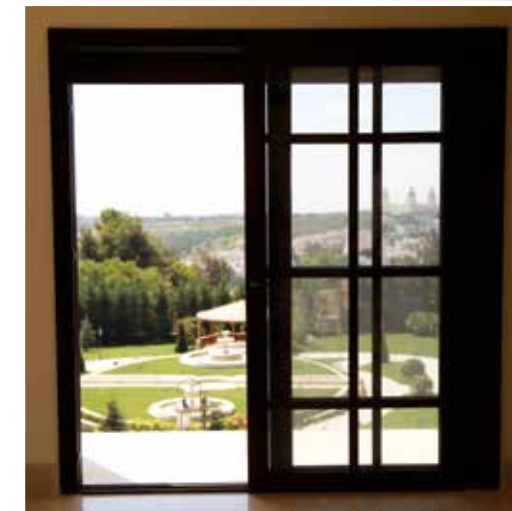
Louvers

Is a window blind or shutter with horizontal slats that are angled to admit light and air, but to keep out rain and direct sunshine. The angle of the slats may be adjustable as required.





Stabia Aluminum (Wood)

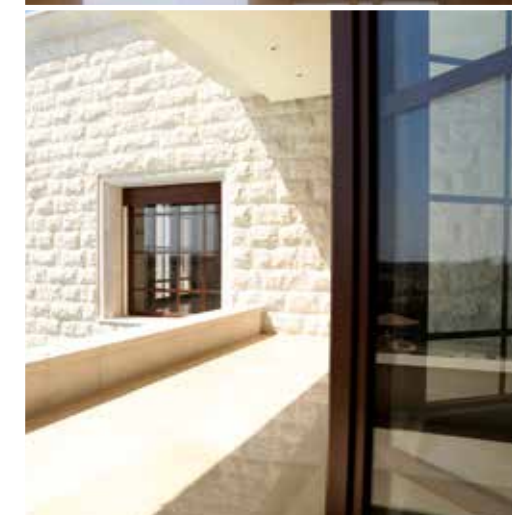


Sometimes a small detail can change how your room looks, so how about if you have a natural wooden frame for your window! But when using a wooden profile on two sides of the window, the outer wooden frame will be subject to the forces of nature, therefore, a lot of continuous maintenance will be needed; Stabia Alluminio finally fixed this problem by providing Elios Wood, a profile that combines wood & aluminum, where you can enjoy the beauty of natural wood while sitting inside your room, and rely on how adaptable and stable the aluminum is from the outside.

We At ALUMEX deal with a variety of products provided by Stabia, such as

- Thermally broken EU80WIT
- Thermally broken EU70WIT
- Thermally broken EU80WIT

For more info please visit :
www.stabialluminio.it



sistemi
Elios
WOOD

STABIA
ALLUMINIO



Thermal Break EU80WIT

Thermal break design solution, ideal for the development of medium-sized sliding doors, weighing up to 120 kg. with great reliability and with possibilities for large mirrors, fixed and opening, due to coupling with the EU60WIT series.

- Fixed frame 82 mm
- Section 51 mm door
- Beaten wood
- Glass area 42 mm

sistemi
Elios
WOOD

STABIA
ALLUMINIO



Thermal Break EU60WIT

Series with fixed frame section and 60 mm leaf section, and panel doors 78 mm. Glass area 33 mm. Beaten wood 20 mm, coupling Aluminum-Wood with PVC plugs. Air-water tightness open joint with central gasket EPDM.

- Fixed frame 60 mm
- Section 78 mm door
- Beaten wood 20 mm
- Glass area 33 mm

sistemi **Elios** W O O D **SE STABIA** ALLUMINIO



Thermal Break EU170WIT

- Fixed frame 178 mm
- Section 70 mm door
- Beaten wood
- Glass area 42 mm

sistemi **Elios** W O O D **SE STABIA** ALLUMINIO



ALUMEX MANAGEMENT & STAFF HOPES SINCERELY THAT
THIS CATALOGUE HAS PROVIDED YOU WITH ENOUGH
CURIOSITY TO CONTACT US, AND GIVE US A CHANCE TO
PROVE THAT EXCELLENCE IS OUR WAY ...
JOIN US IN A QUICK TOUR OF SOME OF OUR PROJECTS,
HOPEFULLY ONE DAY WE CAN ENRICH OUR CLIENT LIST
WITH YOUR NAME AMONG THEM.

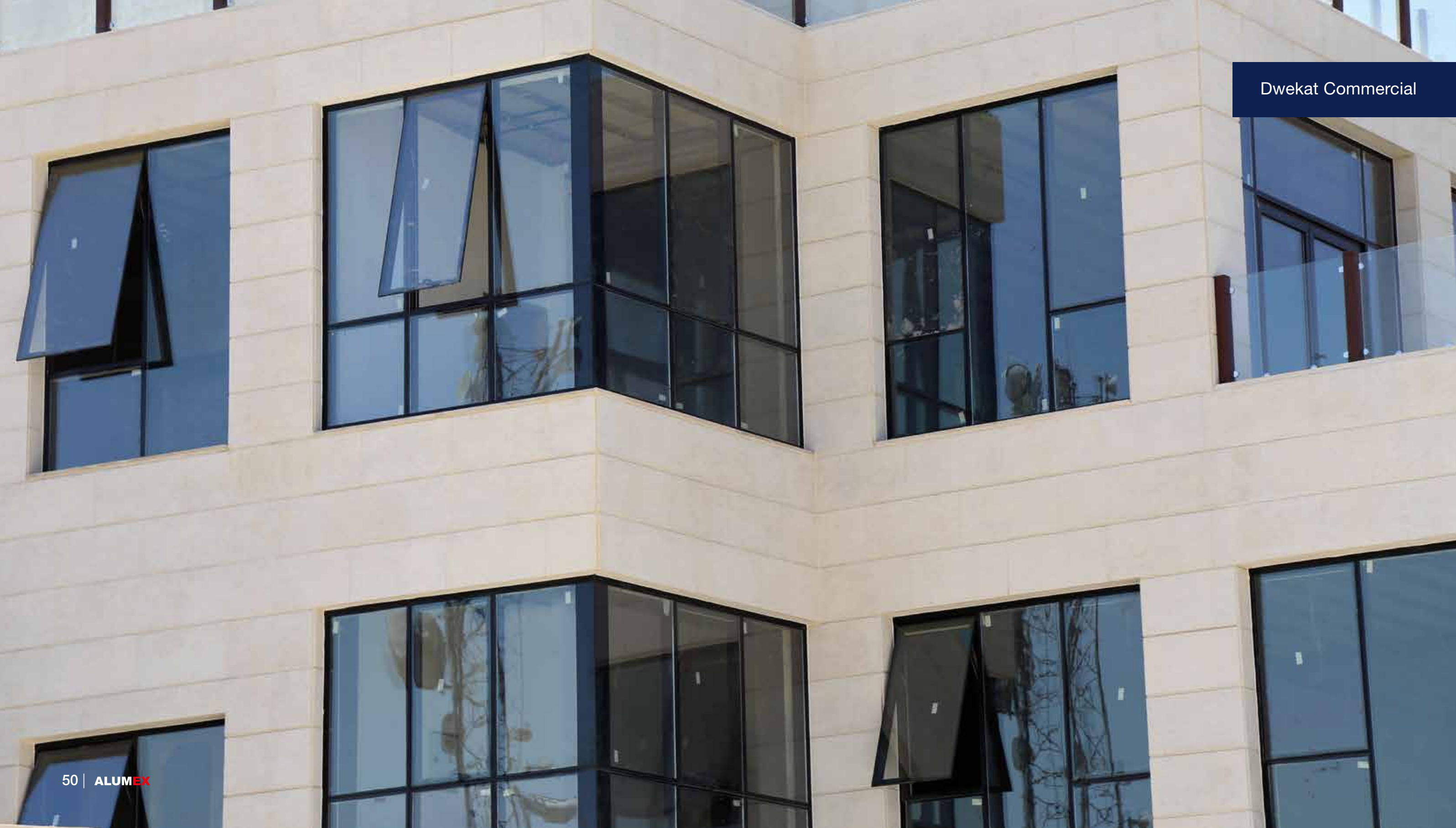
YOUR VISION, OUR **EXPERTISE**



COMMERCIAL BUILDINGS

Library - German
Jordanian University



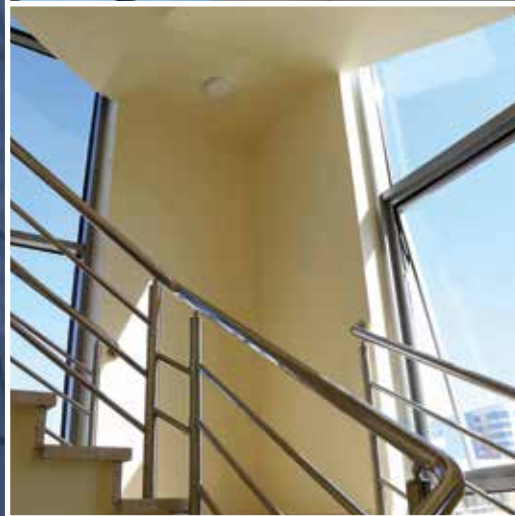


Dwekat Commercial





Leen Park Commercial



Stadiums Legend





Media Center - Sport City



Panorama Blue

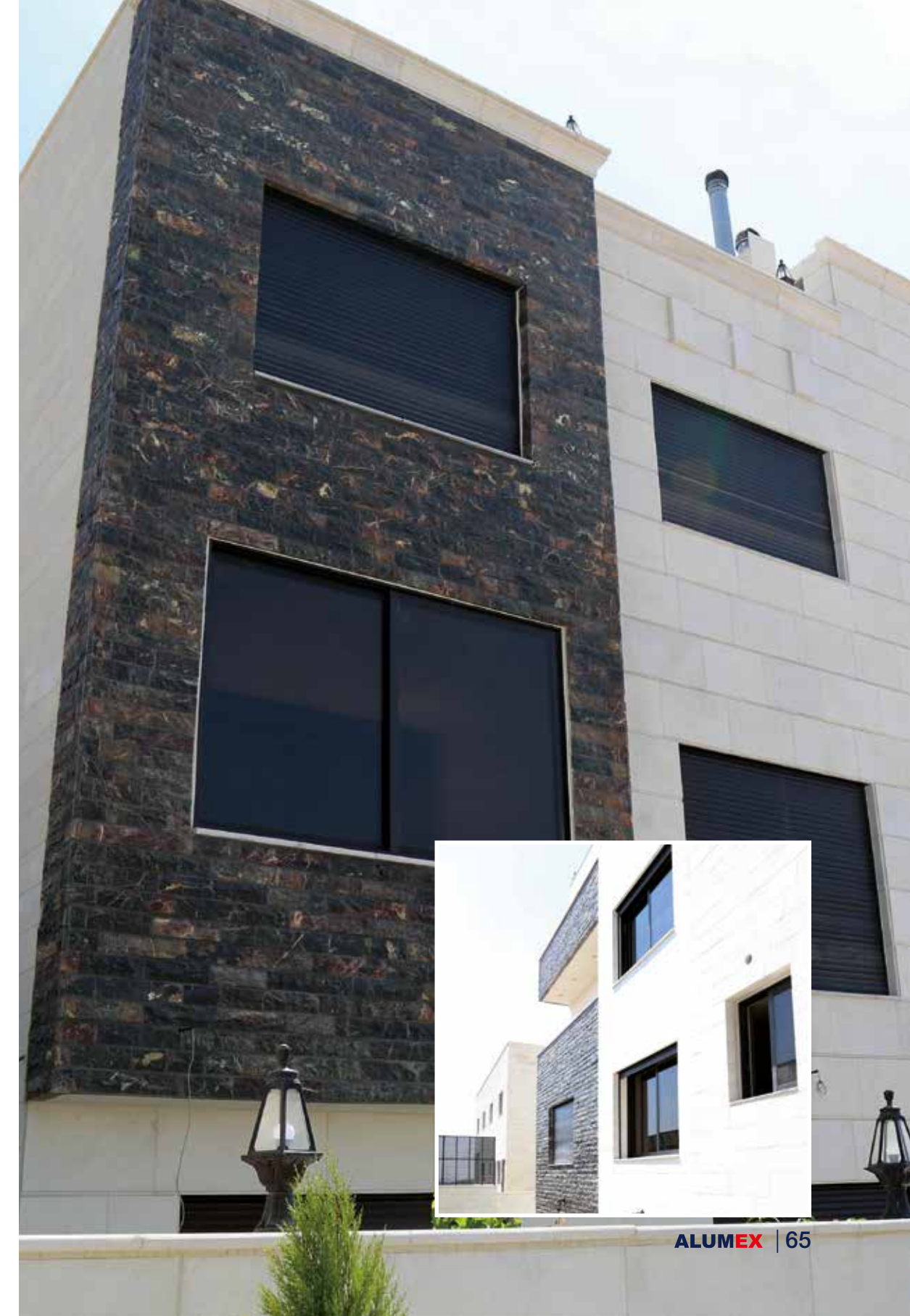


PRIVATE **VILLAS**





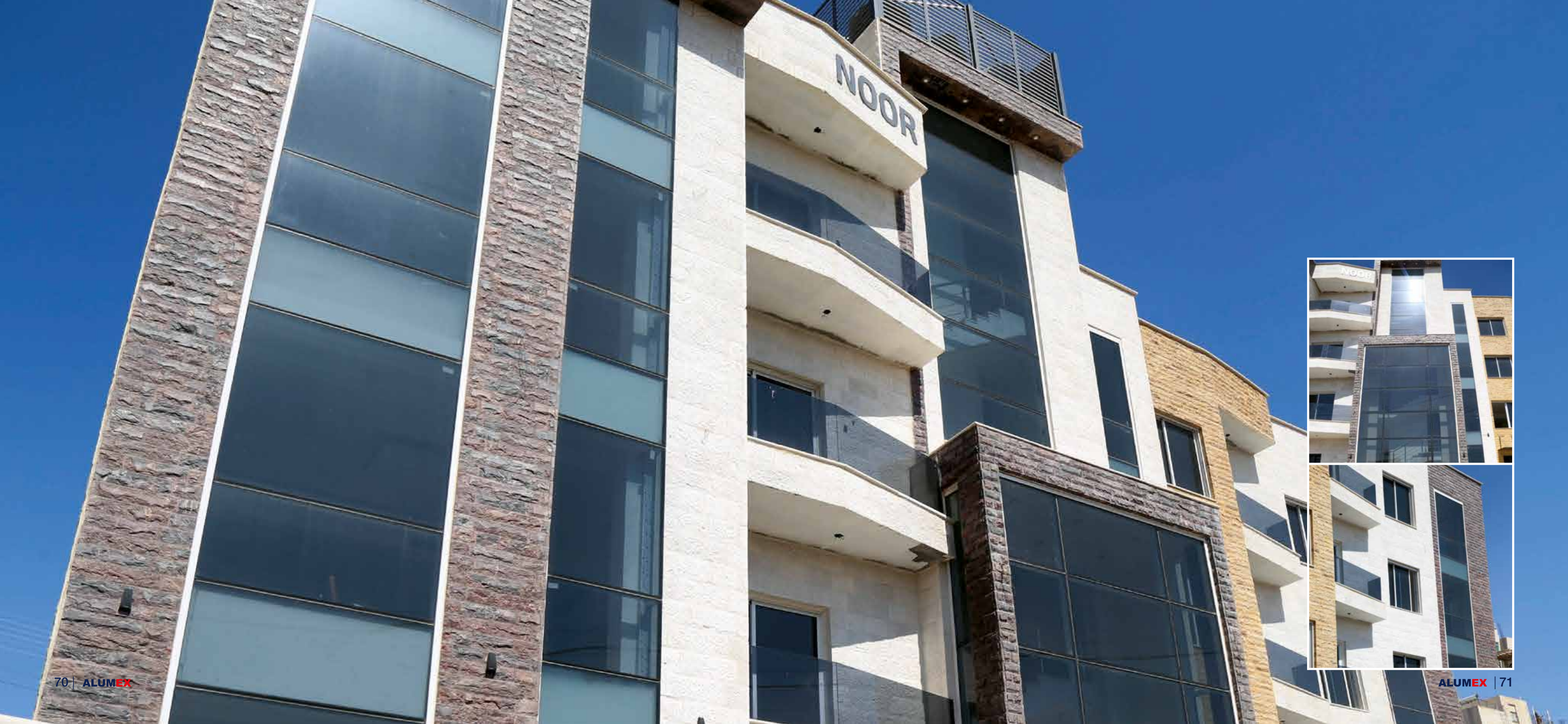




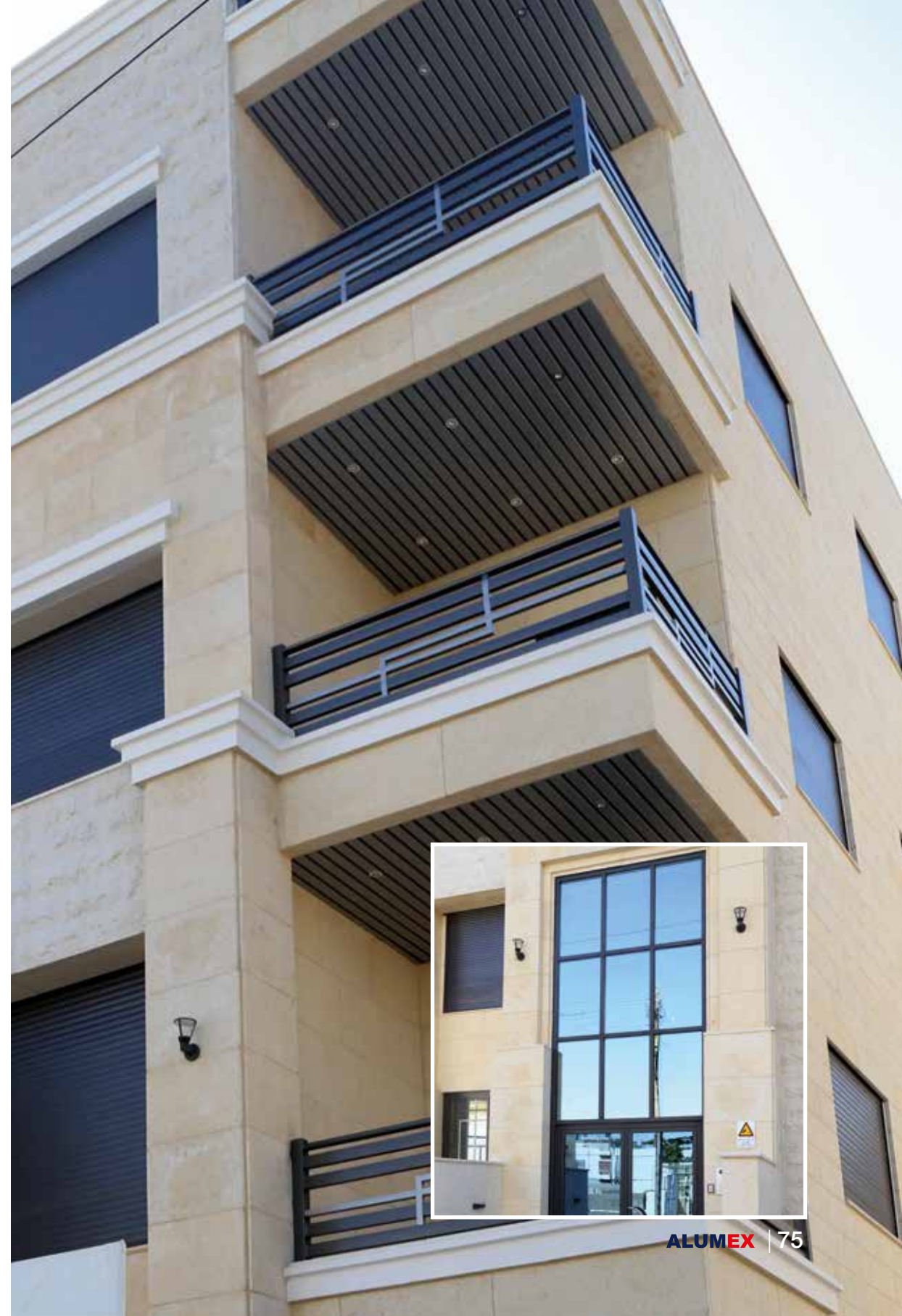




RESIDENTIAL APARTMENTS









CONTACT



Khalda - Amir Ben Malek St.
P.O.Box 609 - Amman 11821 Jordan
Tel. +962 6 5377009 - Fax. +962 6 5374009
info@alumex.com.jo

  /alumexjor
alumex.com.jo

